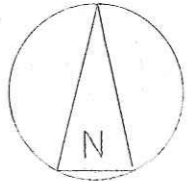


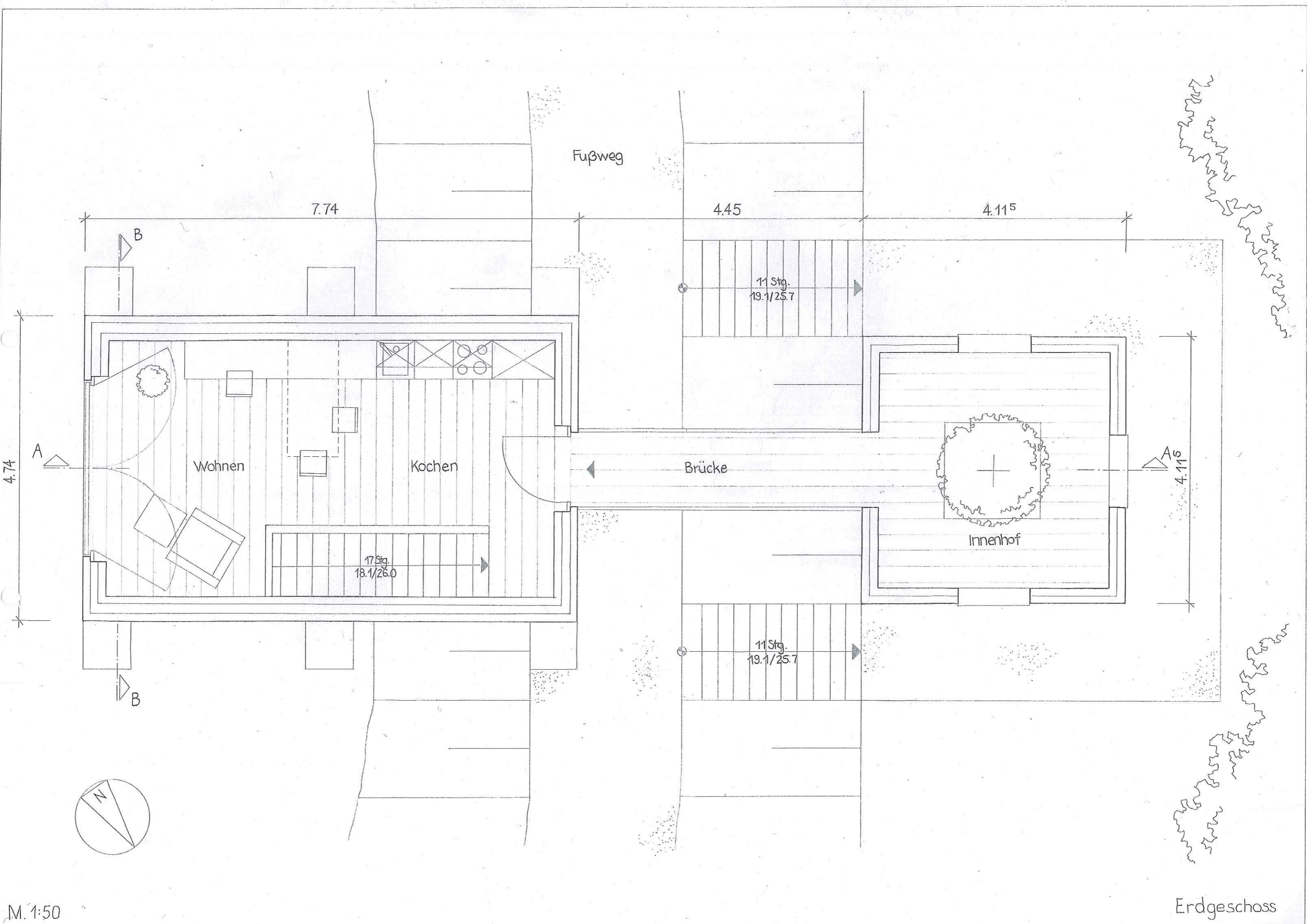
Schlossgraben

Fußweg

Fußweg

Fußweg





Fußweg

7.74

4.45

4.11⁵

4.74

Wohnen

Kochen

Brücke

Innenhof

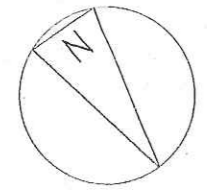
11 Stg.
19.1/25.7

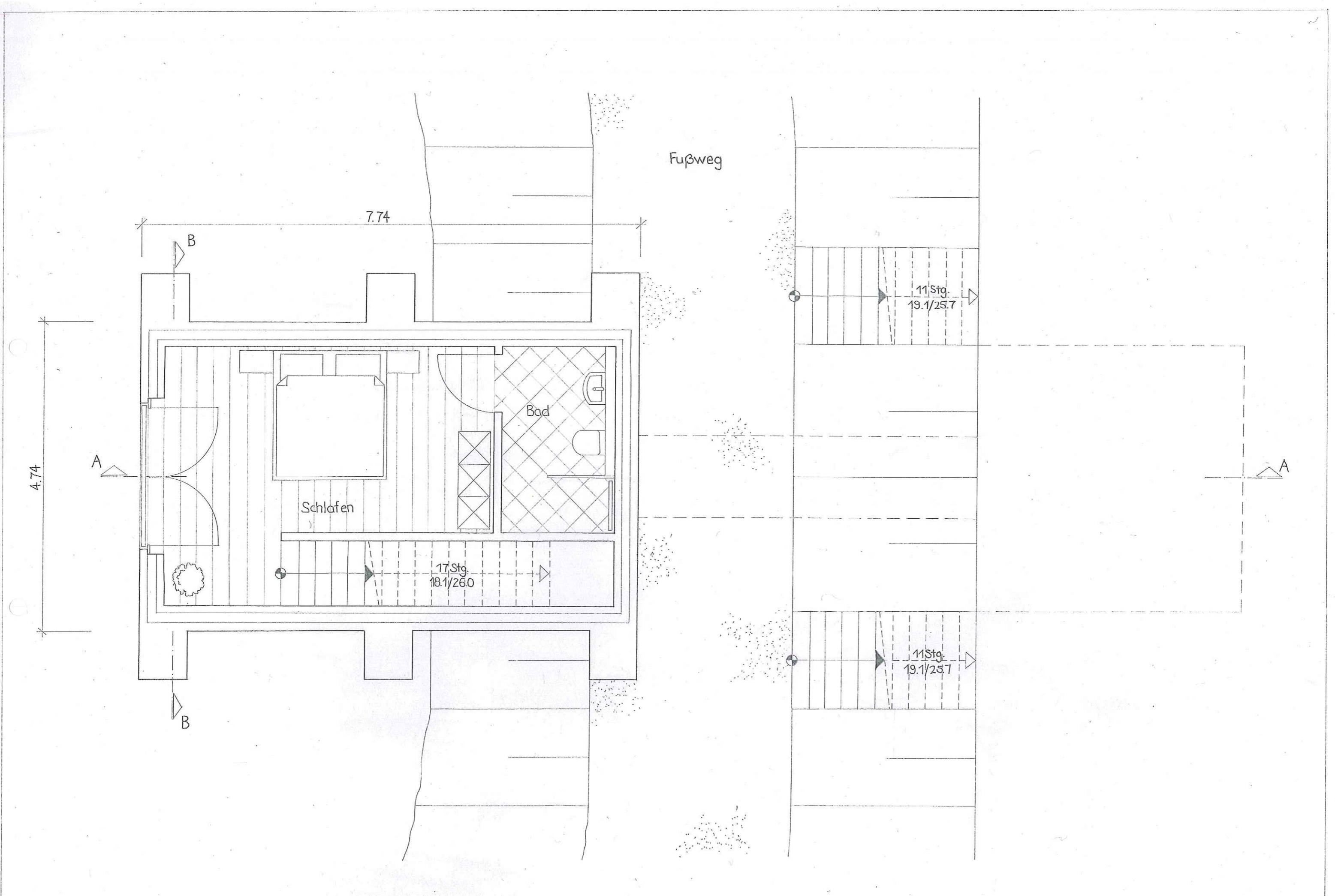
17 Stg.
18.1/26.0

11 Stg.
19.1/25.7

Erdgeschoss

M. 1:50





Fußweg

7.74

4.74

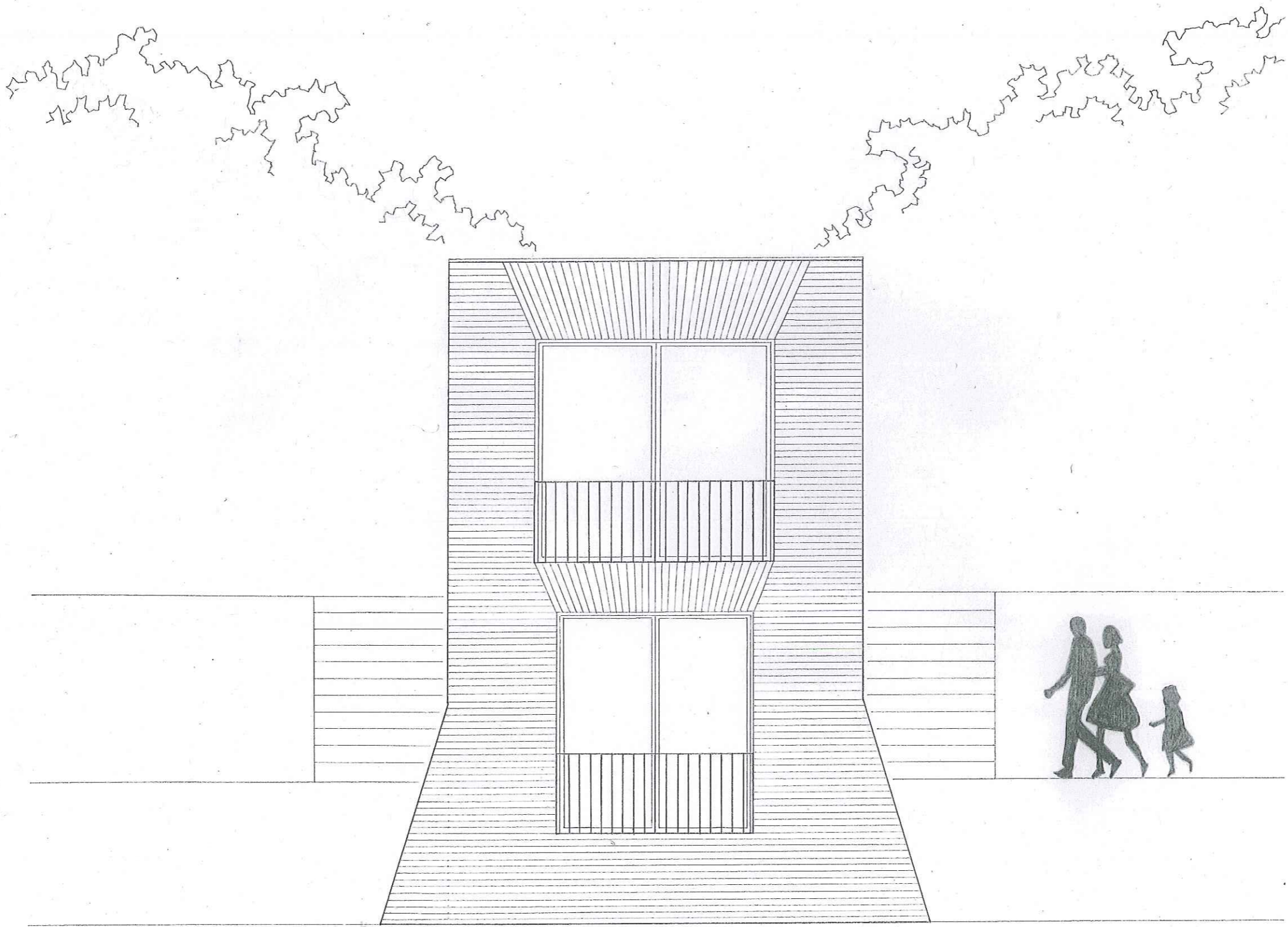
Schlafen

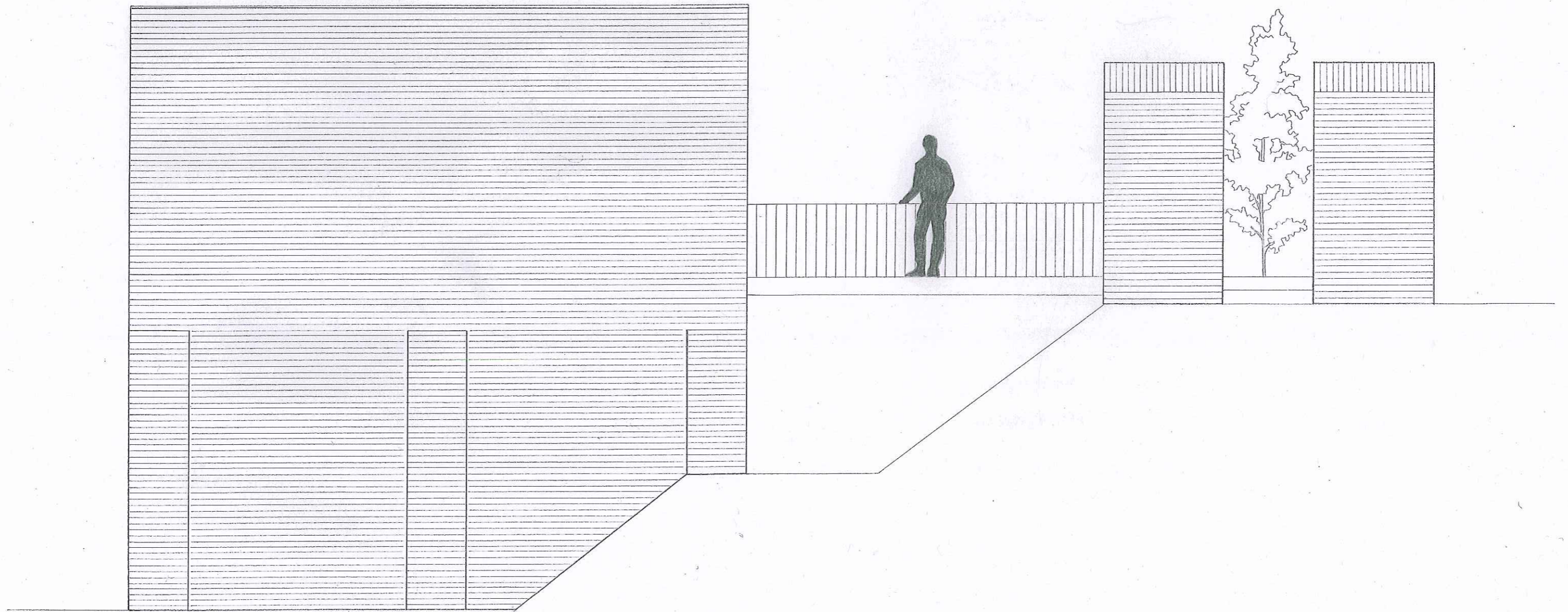
Bad

17 Stg.
18.1/26.0

11 Stg.
19.1/25.7

11 Stg.
19.1/25.7





+3.39 TH
▽

▲
+2.93 OKRD

±0.00 OKFB
▽

▲
-0.15 OKRD

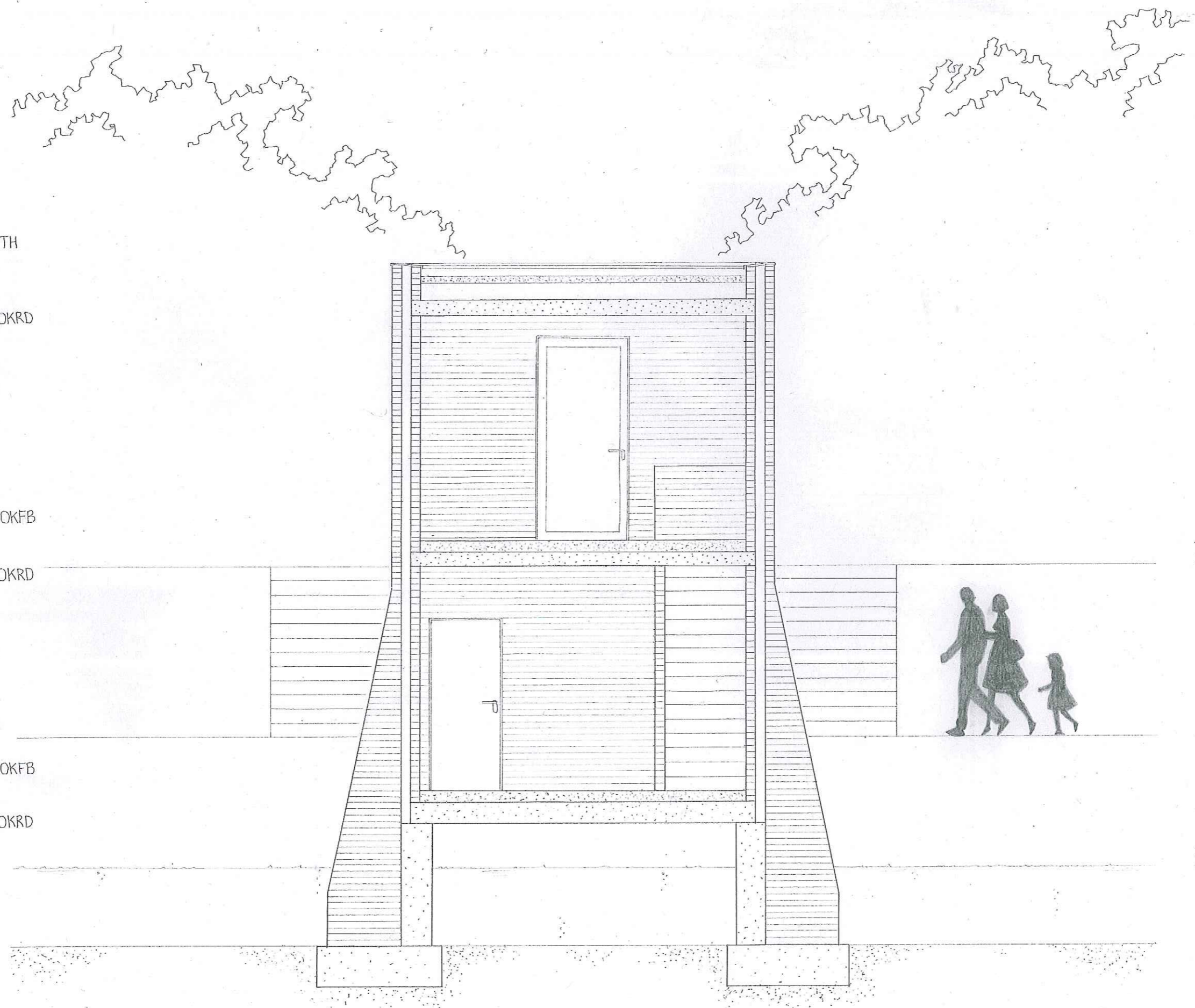
-3.08 OKFB
▽

▲
-3.23 OKRD

-0.34 OK Gelände
▽

-2.44 OK Fußweg
▽

-4.03 OK Wasser
▽



+3.39 TH

+2.93 OKRD

±0.00 OKFB

-0.15 OKRD

-3.08 OKFB

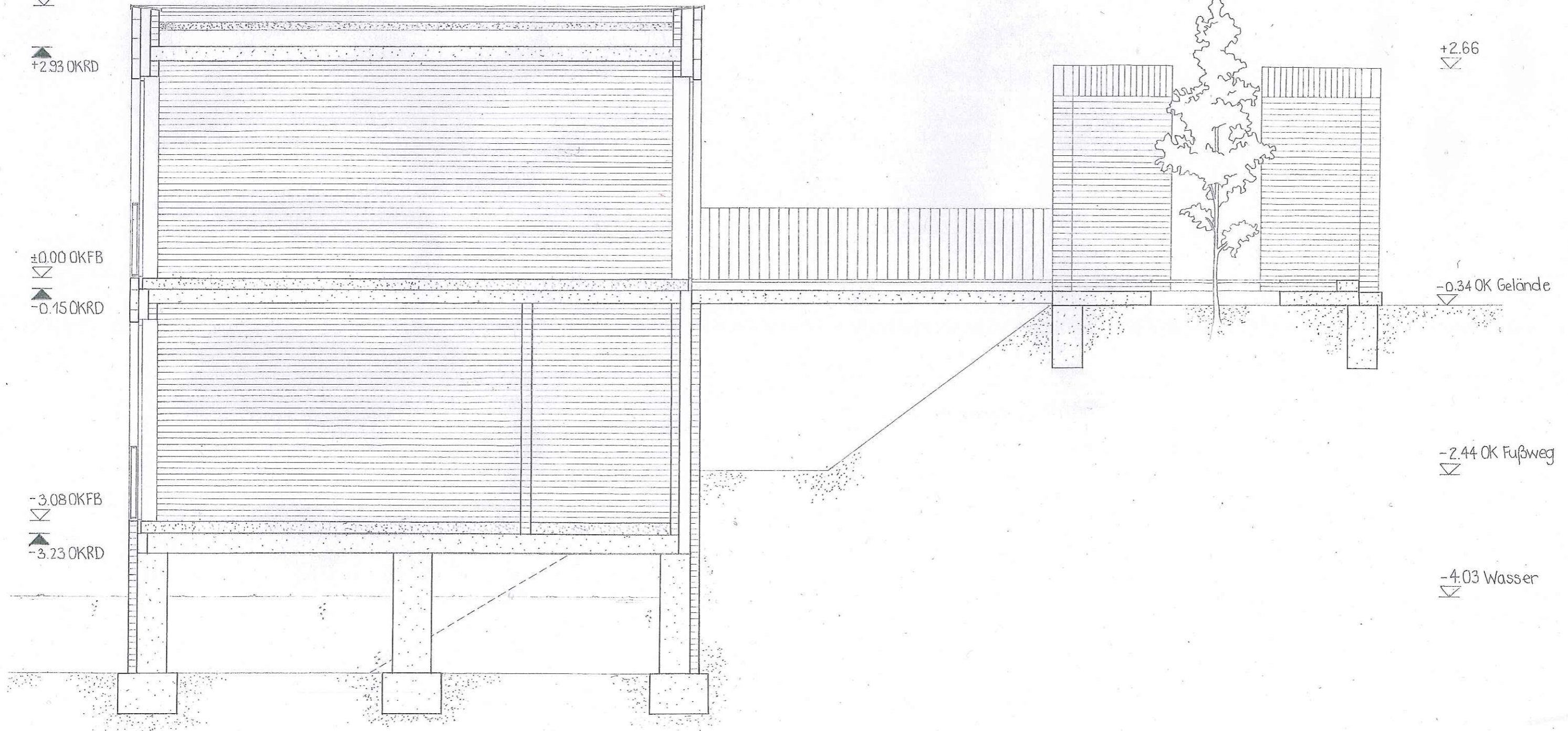
-3.23 OKRD

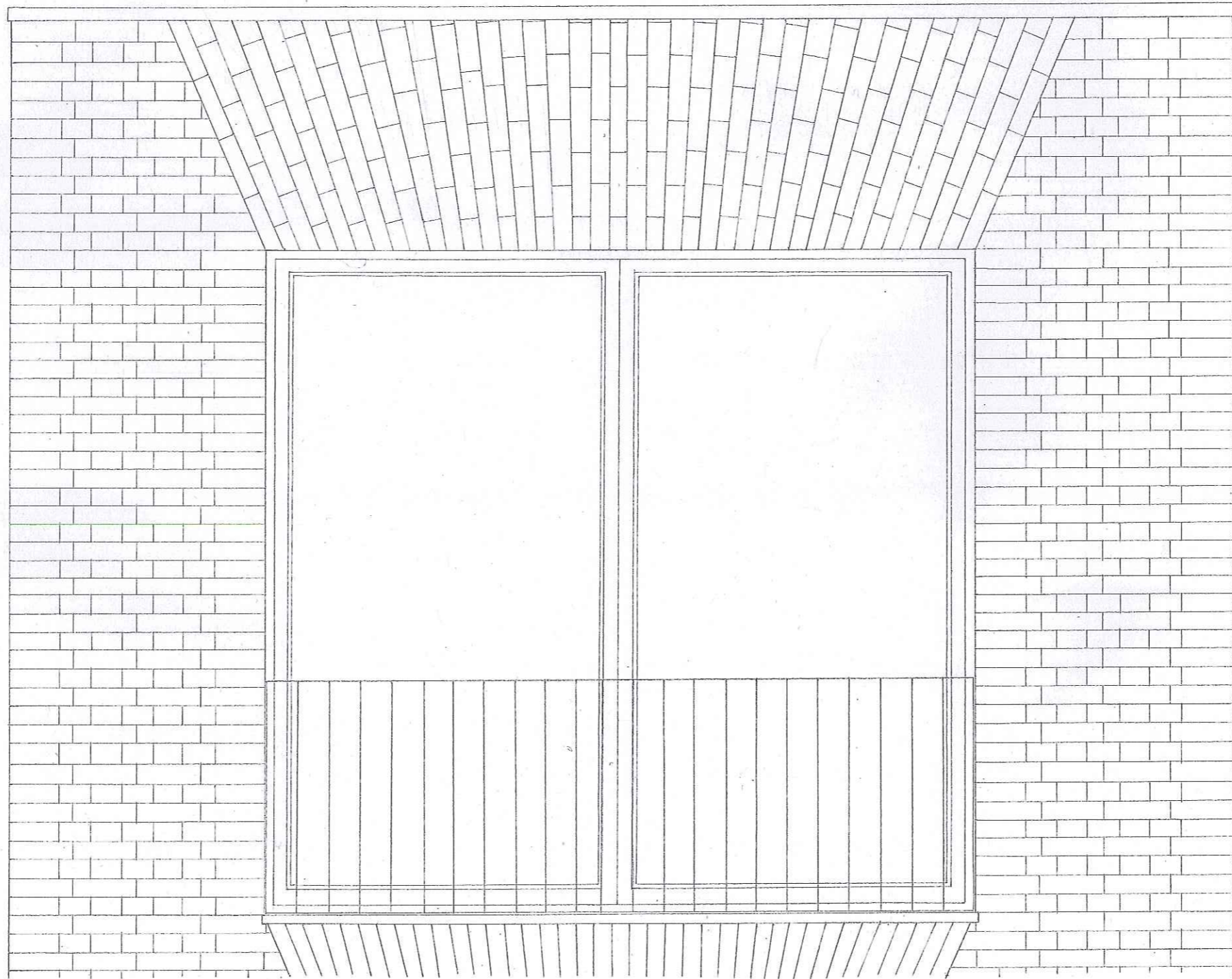
+2.66

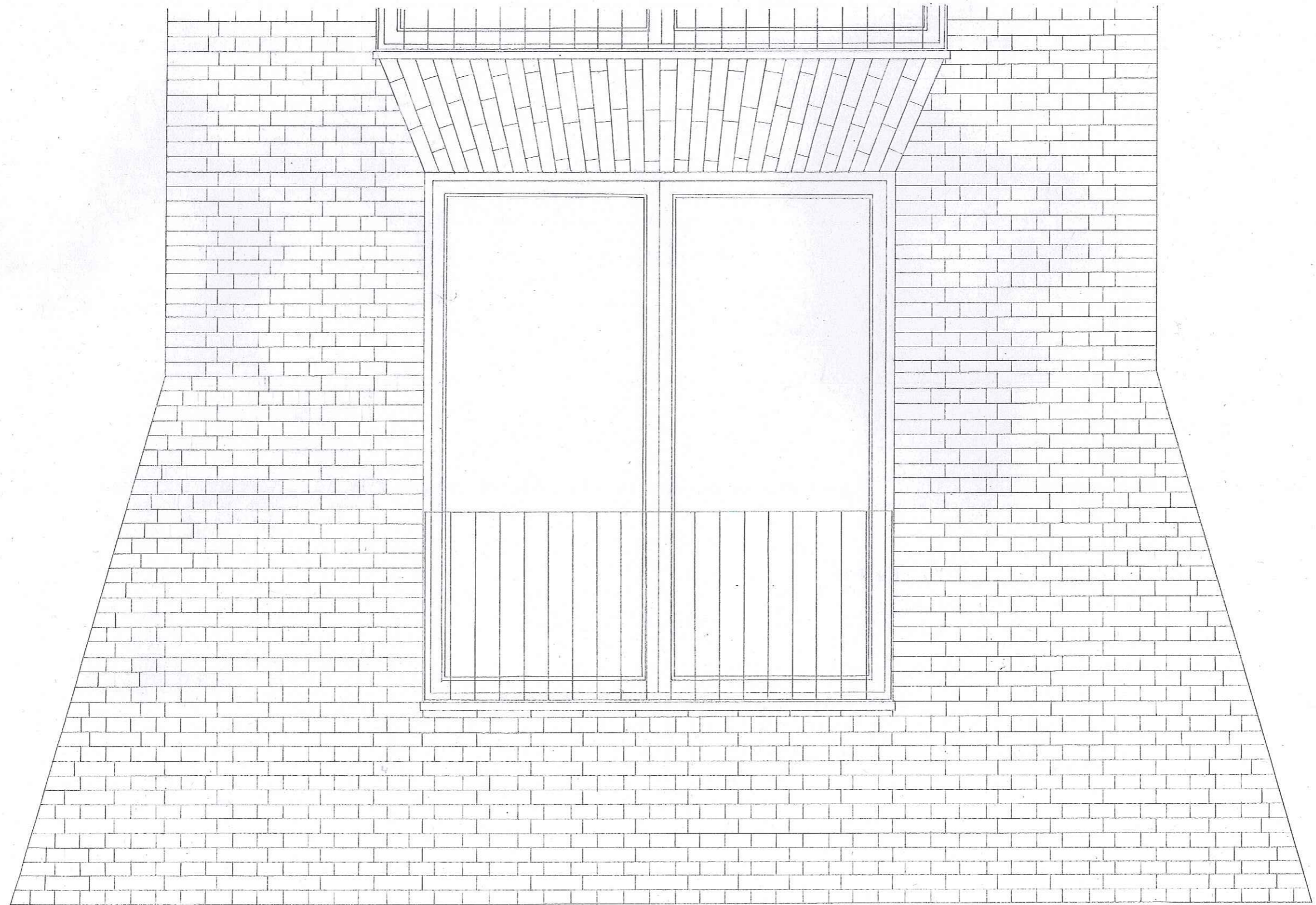
-0.34 OK Gelände

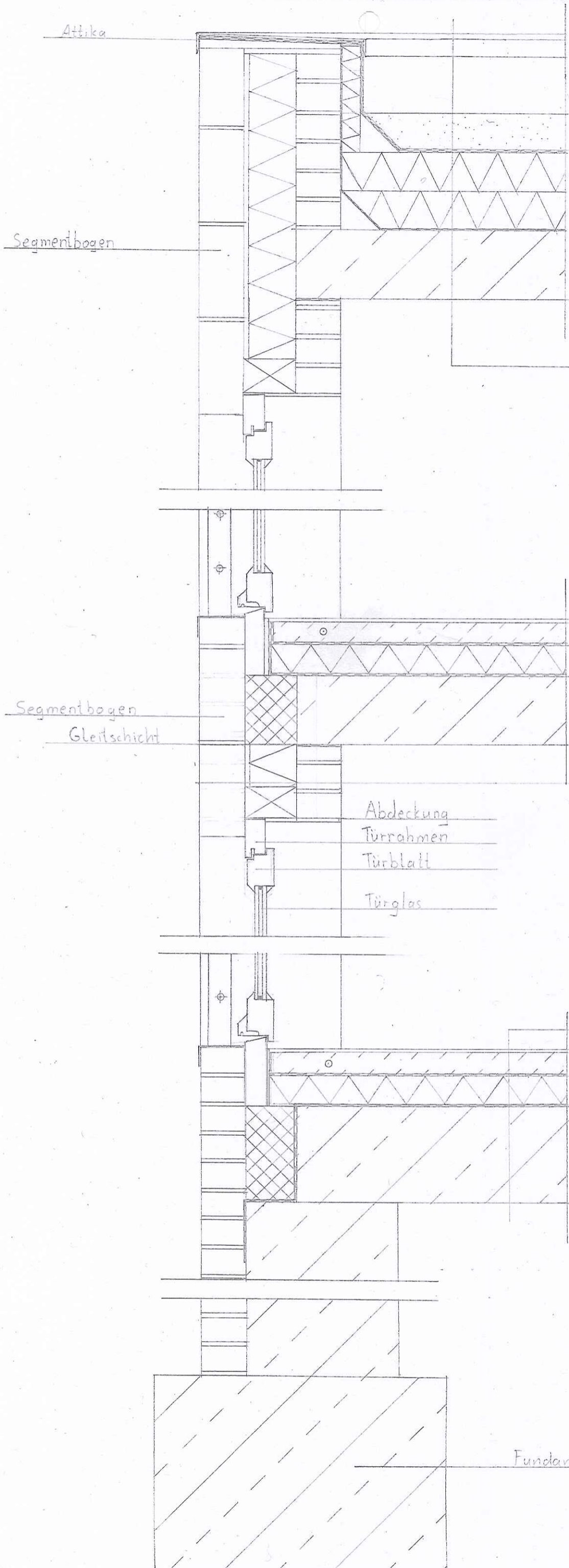
-2.44 OK Fußweg

-4.03 Wasser









Attika

Segmentbogen

Deckenaufbau
 Oberflächenschutz
 Abdichtung
 Dampfdruckausgleichsschicht
 Wärmedämmung
 Dampfsperre
 Trennschicht
 Stahlbetonplatte

Segmentbogen
 Gleitschicht

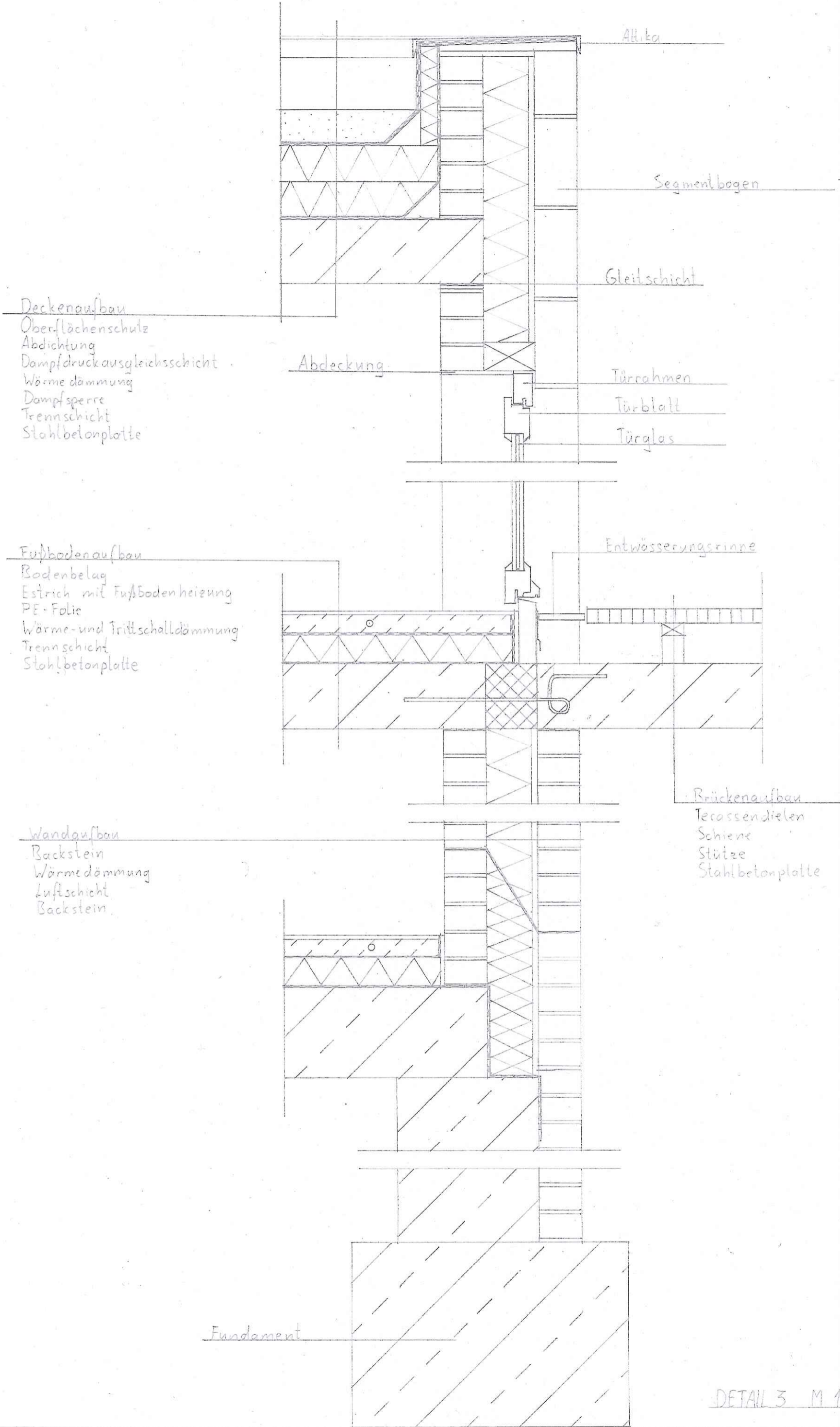
Abdeckung
 Türrahmen
 Türblatt
 Türglas

Wandaufbau
 Backstein
 Wärmedämmung
 Luftschicht
 Backstein

Fußbodenaufbau
 Bodenbelag
 Estrich mit Fußbodenheizung
 PE-Folie
 Wärme- und Trittschalldämmung
 Trennschicht
 Stahlbetonplatte

Fundament

DETAIL 4 M 1:10



DETAIL 3 M 1:10

